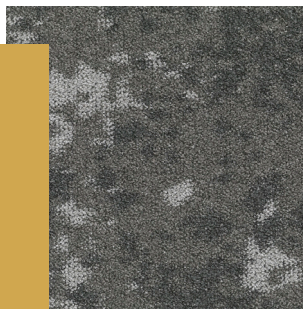


BLOQ

creative
carpet tiles



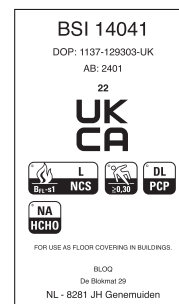
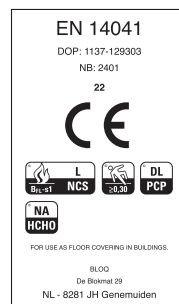
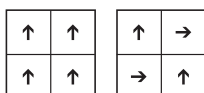
THE CREATE MEDIUM

SPECIFICATIONS

TYPE OF MANUFACTURE	Tufted Patterned Loop Pile 1/10"
ISO 2424	
PILE FIBER COMPOSITION	100% Polyamide 6
ISO 2424	Solution Dyed Nylon made by Aquafil
SECONDARY BACKING	Bitback, Modified Bitumen
ISO 2424	70% Recycled Content
DIMENSION	50 x 50 cm
EN ISO 24342	
PILE WEIGHT	1 000 g/m ²
ISO 8543	
SURFACE PILE WEIGHT	590 g/m ²
ISO 8543	
TOTAL WEIGHT	5 000 g/m ²
ISO 8543	
TOTAL THICKNESS	8.5 mm
ISO 1765	
PILE HEIGHT	4.6 mm
ISO 1766	
PILE DENSITY	0.126 g/m ³
ISO 8543	
NUMBER OF TUFTS	215 000 /m ²
ISO 1763	
DIMENSIONAL STABILITY	≤ 0.2%
ISO 2551	
NUMBER OF COLOURS	MEDIUM: 1
PACKAGING	Box: 16 tiles / 4 m ² Pallet: 160 m ²

PERFORMANCE

CLASSIFICATION	33
EN 1307	
LUXURY RATING	LC2
EN 1307	
CASTOR CHAIR RATING	A: Intensive use
EN 985	
FIRE CLASSIFICATION	B _{f1} -s1
EN 13501-1	
IMPACT SOUND INSULATION	ΔL _w : 26 dB
EN ISO 10140-3	
SOUND ABSORPTION	Frequency Hz 125 250 500 1000 2000 4000
EN ISO 354	α _s 0.01 0.03 0.10 0.22 0.36 0.46
NOISE REDUCTION	α _w : 0.20
EN ISO 354	
PERMANENT ANTISTATIC	≤ 2 kV
ISO 6356	
TRANSVERSAL RESISTANCE	≤ 1 X 10 ⁹ Ohm
ISO 10965	
THERMAL RESISTANCE	0.079 m ² /K/W
ISO 8302	
COLOUR FASTNESS TO LIGHT	≥ 7
EN ISO 105-B02	
COLOUR FASTNESS TO WATER	≥ 4
EN ISO 105-E01	
RUBBING FASTNESS	≥ 4
EN ISO 105-X12	
GUT N° PRODIS	4AECEB09



05/03/2024

All rights reserved to alter technical specifications.