

—  
BLOQ

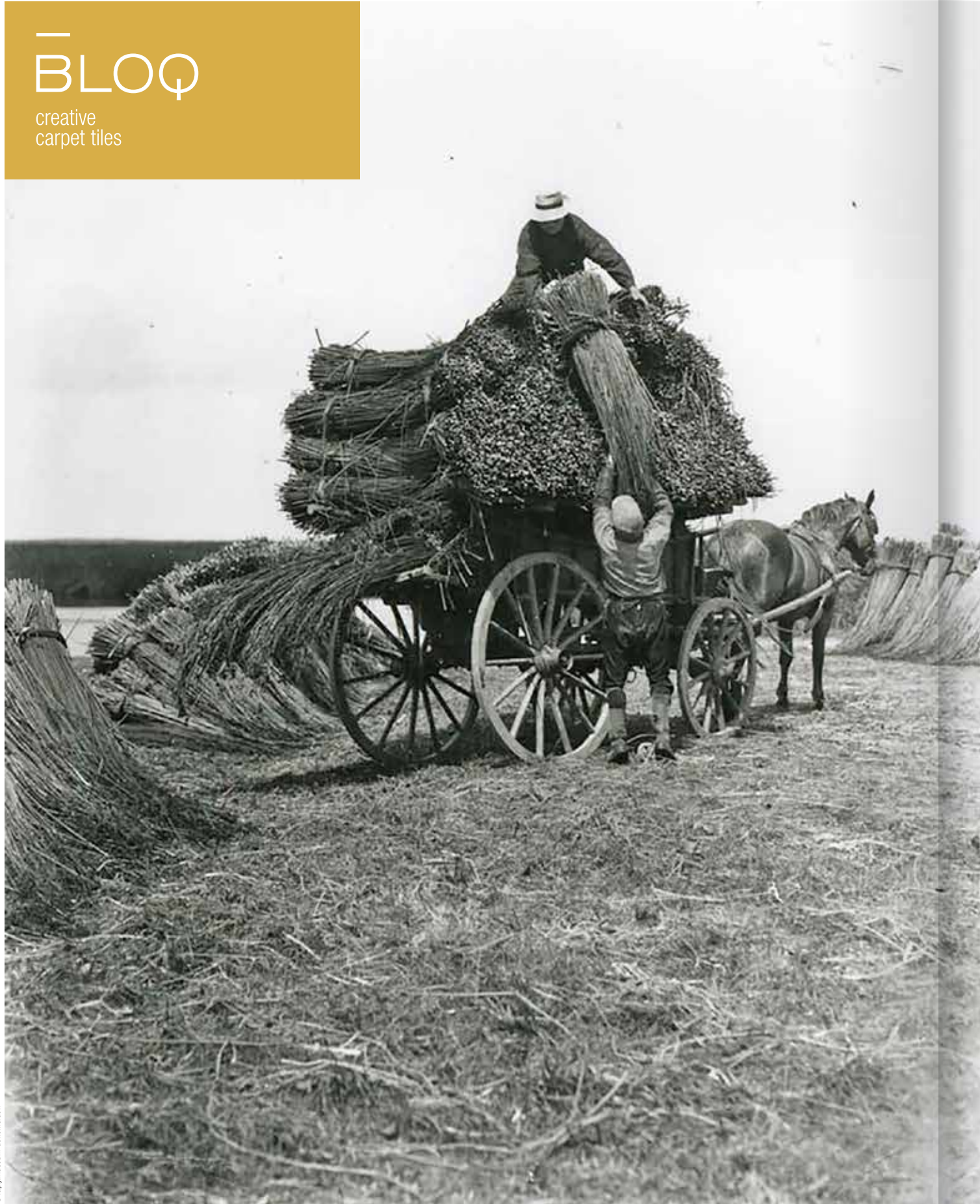
creative  
carpet tiles



THE TEXTURED  
CANVAS

BLOQ

creative  
carpet tiles



© Rijksmuseum, Genemuiden



© Het Rijksmuseum, Johannes Vermeer

### Nice to know

The colour ochre in the BLOQ logo refers to the rushes and the colour palette of the Golden Age in Holland.

## Our story

Being part of Betap, BLOQ can build on more than **100 years of experience** in the flooring sector. Betap grew from a local manufacturer of rush mats in 1918 to an internationally renowned carpet manufacturer.

Working with some of the most reputable architects, designers and commercial carpet partners, Betap's **high-traffic commercial carpet** is used across the world in prestigious office buildings, hotels, universities, museums and various leisure applications. Betap is your partner of choice for commercial carpet.



## High-end production line

Group Betap is an **innovative carpet manufacturer** in Genemuiden (The Netherlands) with a vertically integrated production line for tufted and non-woven floor coverings, as well as an own yarn production line.

With BLOQ, we are developing and producing **creative carpet tiles** that comply with the stringent regulations for the commercial market. We offer high-performance tiles focused on office projects, that are sound absorbing and have the best results in fire safety. Our products are also produced following the strictest standards in sustainability.

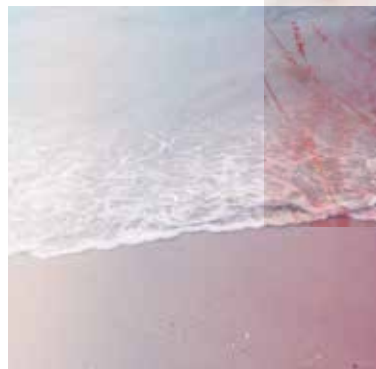


# The Textured

Inspired by natural elements, The Textured collection plays with soft tones and textures. The collection is based on coarsely woven fabrics known for their timeless look, such as linnen.



*Soft tones*



*Moods*



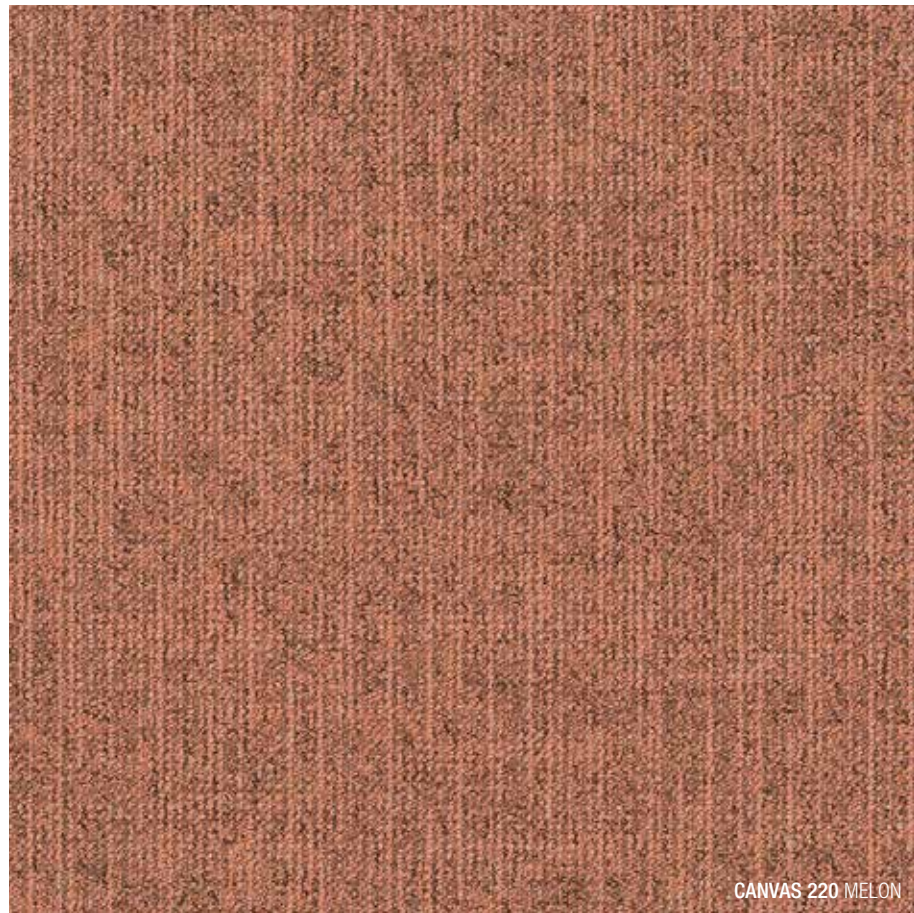
©Stone Paper Feather



*Canvas grid*



THE TEXTURED  
CANVAS



Inspiration  
is everywhere

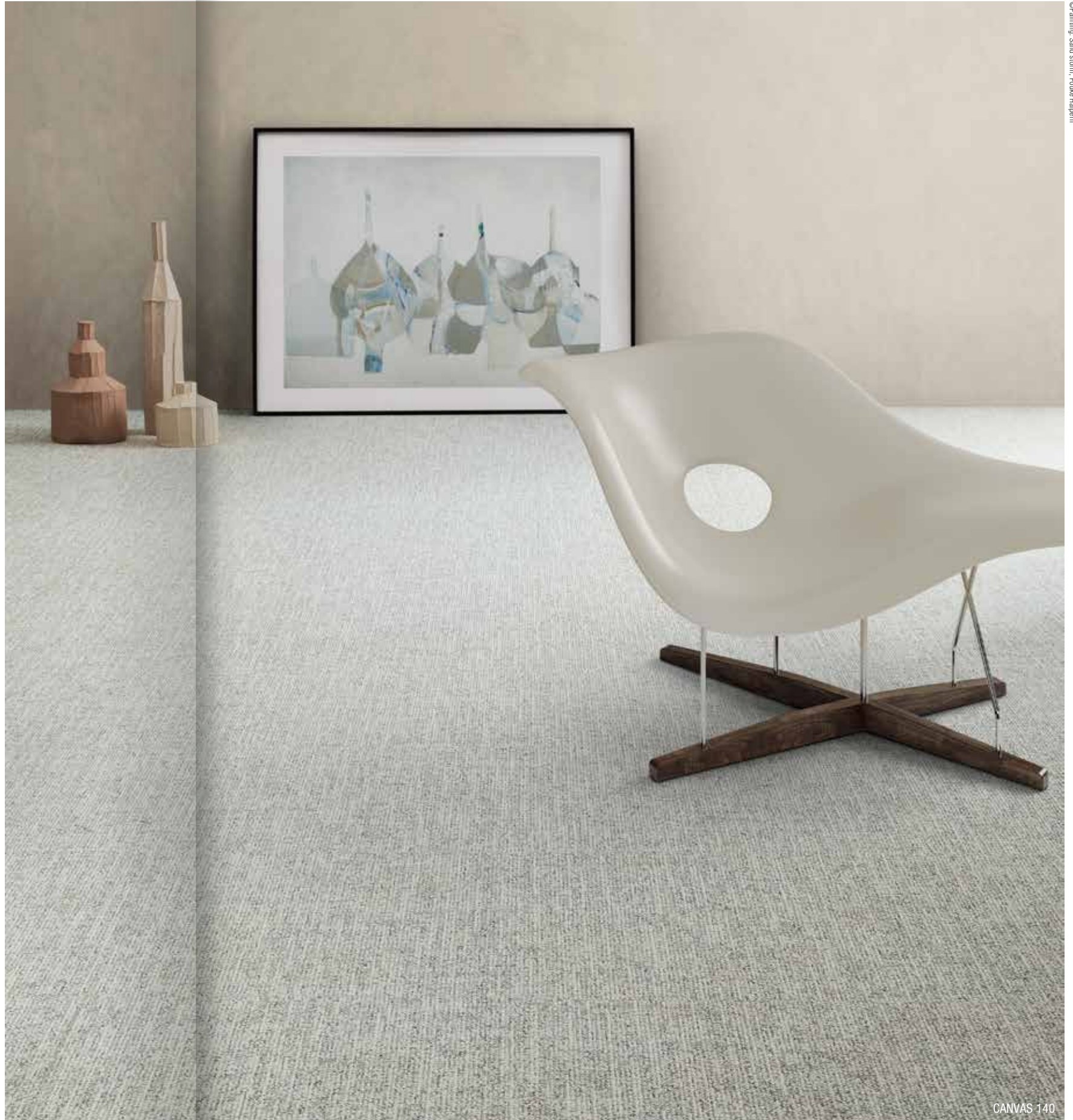
*Feel the texture*



## Natural feel

CANVAS measures 50 x 50 cm and is part of The Textured collection, a group of carpet tiles with a tactile and visible structure. The tile boasts proportional patterns in 18 natural pastel colours reflecting openness, softness, calmness and composure.

Looking for a natural look and feel?



©Painting: Sand storm, Puke Heipen

CANVAS 140



CANVAS 820 & 220



220 MELON

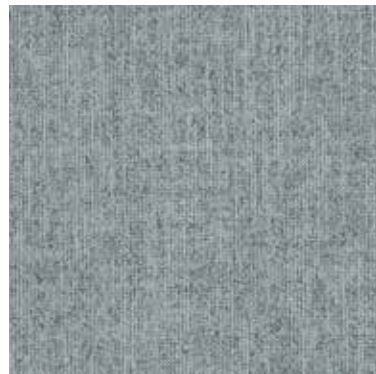


820 TIMBER

# Colour range

CANVAS comes in **18 natural, pastel colours**. Soft hues and deeper tones, but all gentle moods. Use them in one colour tone or mix with complementary colours, according to your taste. The general feeling with pastels is one of openness, softness, calmness and composure.

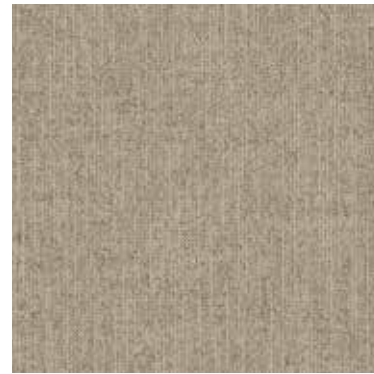
CANVAS feels like a beautiful garden of soft flower tones.



955 SILVER



140 COTTON



145 IVORY



960 CONCRETE



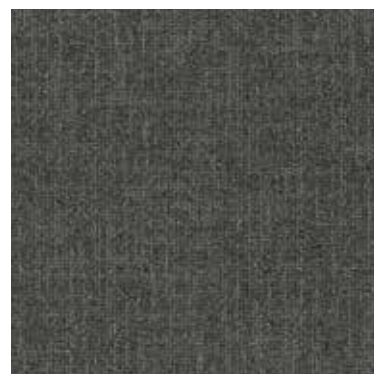
970 STORM



220 MELON



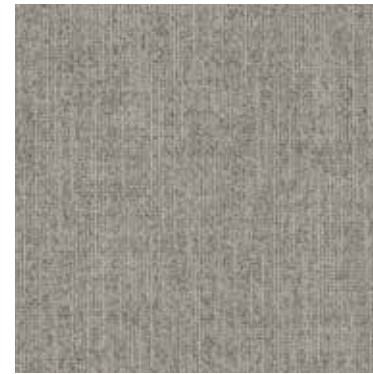
965 SMOKE



935 SLATE



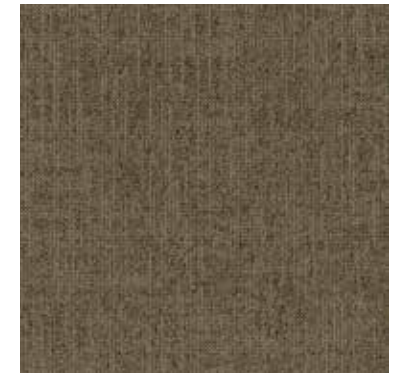
820 TIMBER



150 PEARL



225 AMBER



815 OLIVE



310 SIENNA



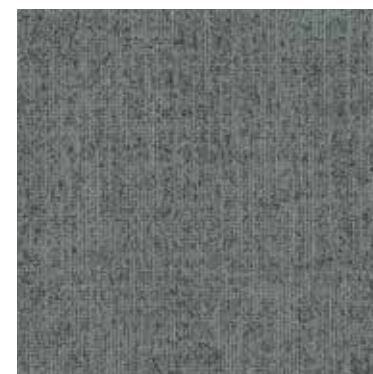
230 LIME



625 SAGE



415 LILAC



535 SKY



540 BLUESTONE





CANVAS 230



©Photo on table: Ode to Morandi, Fiasse de Reijl

CANVAS 230 & 970



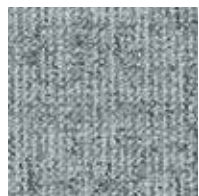
230 LIME



970 STORM

## Pure or mixed

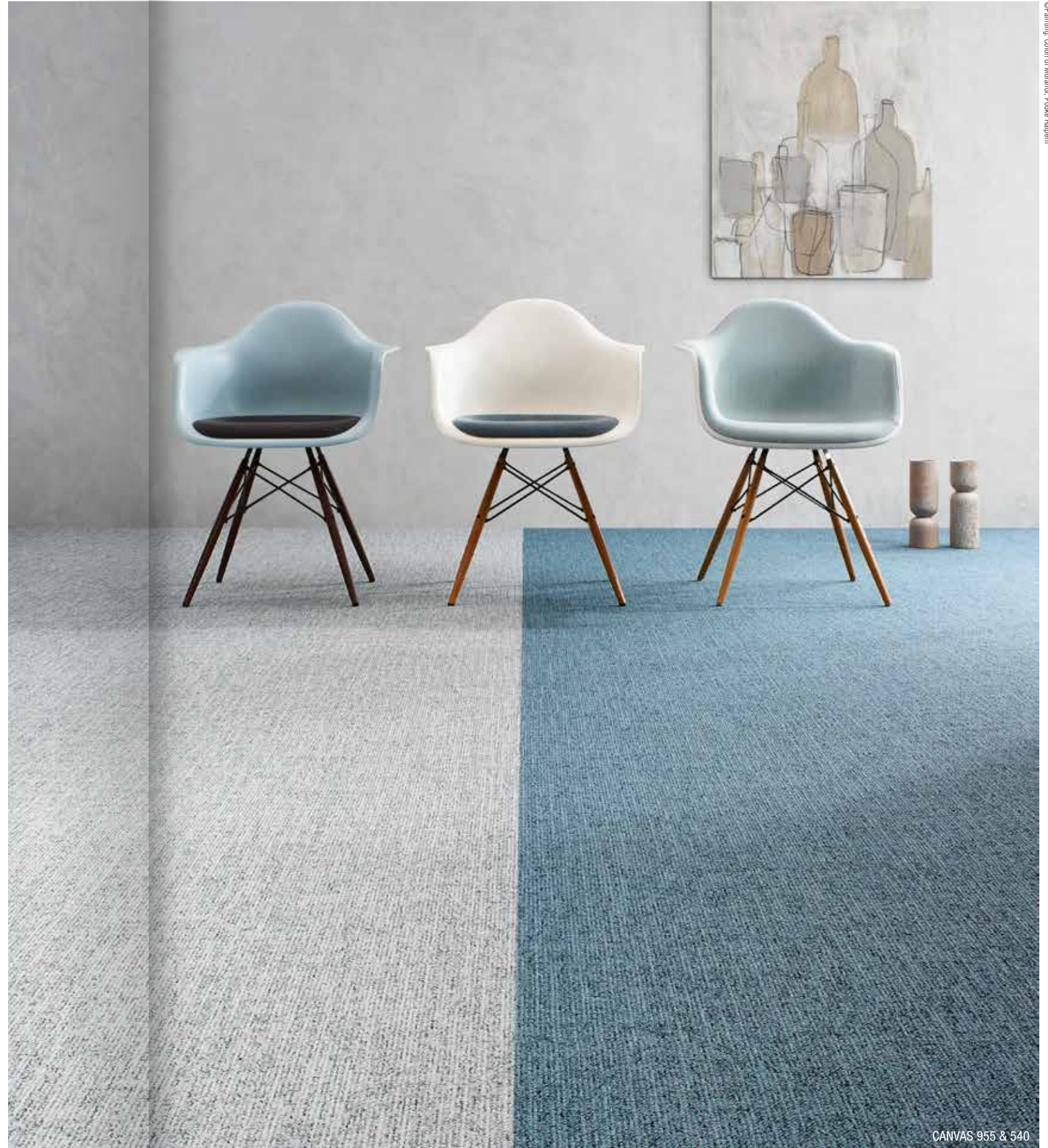
Use the colours pure in one colour tone or dare to mix with other tones. Soft hues stimulate a homely feeling at work, current colours meet today's trends.



955 SILVER



540 BLUESTONE



©Painting: Colori di Morandi, Poike Halpern

CANVAS 955 & 540



©Painting: Sand storm, Pouki Halpern

CANVAS 145 & 225



CANVAS 225



145 IVORY



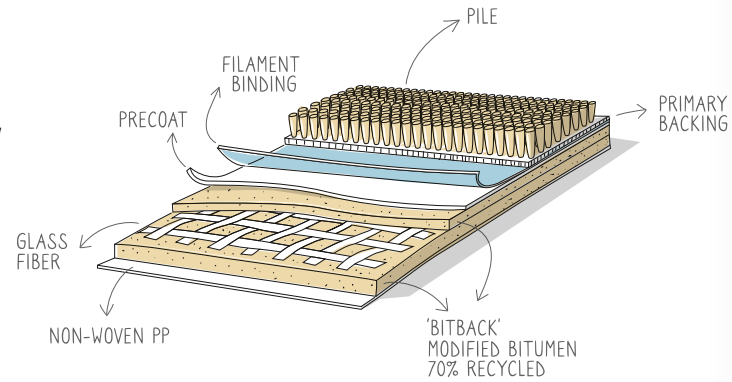
225 AMBER

# Highlights

## DIMENSIONAL STABILITY & HIGH PERFORMANCE

BLOQ uses **glass fiber fleece**, which gives more dimensional stability ( $\leq 0.2\%$ ). The **durable quality** is guaranteed by multiple certifications:

- Commercial heavy classification (Class 33 - EN 1307)
- Suitable for castor chairs (EN 985)
- Colour fastness to light (EN ISO 105-B02)



## SOLUTION DYED YARNS

BLOQ uses 100% Polyamide 6 Solution Dyed Nylon from **Aquafil**, the best and leading supplier for carpet manufacturers. Solution dyed means **better colour fastness** and the best results to light and water.

## LIGHT REFLECTANCE VALUES

**Light Reflectance Value (LRV)** is a scale that measures visible and usable light reflected from an illuminated surface. The percentage identifies how much light a colour reflects or absorbs. 0% reflects no visible light, 100% reflects all light.

| COLOUR | LRV <sub>av</sub> | L     |
|--------|-------------------|-------|
| 140    | 37.90             | 67.95 |
| 145    | 28.24             | 60.11 |
| 150    | 25.42             | 57.49 |
| 220    | 17.79             | 49.23 |
| 225    | 18.63             | 50.25 |
| 230    | 18.49             | 50.08 |
| 310    | 8.34              | 34.69 |
| 415    | 10.71             | 39.08 |
| 535    | 16.69             | 47.87 |

| COLOUR | LRV <sub>av</sub> | L     |
|--------|-------------------|-------|
| 540    | 11.23             | 39.97 |
| 625    | 14.99             | 45.62 |
| 815    | 12.05             | 41.29 |
| 820    | 10.62             | 38.93 |
| 935    | 8.90              | 35.80 |
| 955    | 28.33             | 60.19 |
| 960    | 13.91             | 44.10 |
| 965    | 9.91              | 37.69 |
| 970    | 16.59             | 47.75 |



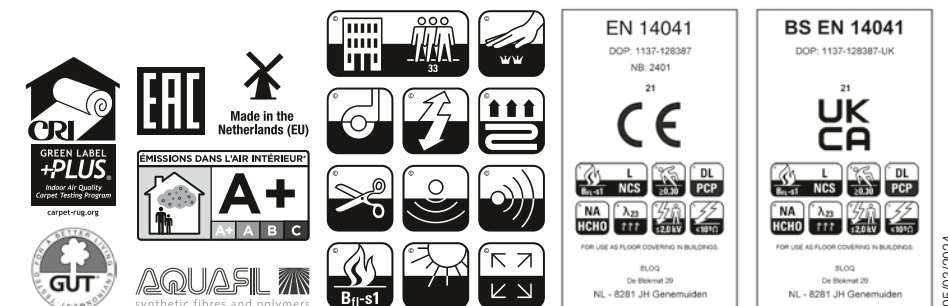
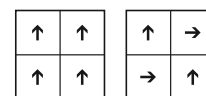
## THE TEXTURED CANVAS

### SPECIFICATIONS

|                               |  |
|-------------------------------|--|
| <b>TYPE OF MANUFACTURE</b>    | Tufted Patterned Loop Pile 1/10"                               |
| ISO 2424                      |  |
| <b>PILE FIBER COMPOSITION</b> | 100% Polyamide 6   |
| ISO 2424                      | Solution Dyed Nylon made by Aquafil                            |
| <b>SECONDARY BACKING</b>      | Bitback, Modified Bitumen                                      |
| ISO 2424                      | 70% Recycled Content   |
| <b>DIMENSION</b>              | 50 x 50 cm   |
| EN ISO 24342                  |  |
| <b>PILE WEIGHT</b>            | 690 g/m <sup>2</sup>   |
| ISO 8543                      |  |
| <b>SURFACE PILE WEIGHT</b>    | 450 g/m <sup>2</sup>   |
| ISO 8543                      |  |
| <b>TOTAL WEIGHT</b>           | 4 400 g/m <sup>2</sup>   |
| ISO 8543                      |  |
| <b>TOTAL THICKNESS</b>        | 6.4 mm   |
| ISO 1765                      |  |
| <b>PILE HEIGHT</b>            | 3.1 mm   |
| ISO 1766                      |  |
| <b>PILE DENSITY</b>           | 0.145 g/m <sup>3</sup>   |
| ISO 8543                      |  |
| <b>NUMBER OF TUFTS</b>        | 152 000 /m <sup>2</sup>  |
| ISO 1763                      |  |
| <b>DIMENSIONAL STABILITY</b>  | $\leq 0.2\%$   |
| ISO 2551                      |  |
| <b>NUMBER OF COLOURS</b>      | 18   |
| <b>PACKAGING</b>              | Box: 20 tiles / 5 m <sup>2</sup><br>Pallet: 200 m <sup>2</sup> |

### PERFORMANCE

|                                 |  |
|---------------------------------|--|
| <b>CLASSIFICATION</b>           | 33                                       |
| EN 1307                         |  |
| <b>LUXURY RATING</b>            | LC2                                      |
| EN 1307                         |  |
| <b>CASTOR CHAIR RATING</b>      | A: Intensive use                         |
| EN 985                          |  |
| <b>FIRE CLASSIFICATION</b>      | B <sub>f</sub> -s1                       |
| EN 13501-1                      |  |
| <b>IMPACT SOUND INSULATION</b>  | $\Delta L_w$ : 24 dB                     |
| EN ISO 10140-3                  |  |
| <b>SOUND ABSORPTION</b>         | Frequency Hz 125 250 500 1000 2000 4000  |
| EN ISO 354                      | $\alpha_s$ 0.00 0.00 0.05 0.15 0.35 0.45 |
| <b>NOISE REDUCTION</b>          | $\alpha_w$ : 0.15                        |
| EN ISO 354                      |  |
| <b>PERMANENT ANTISTATIC</b>     | $\leq 2$ kV                              |
| ISO 6356                        |  |
| <b>TRANSVERSAL RESISTANCE</b>   | $\leq 1 \times 10^9$ Ohm                 |
| ISO 10965                       |  |
| <b>THERMAL RESISTANCE</b>       | 0.079 m <sup>2</sup> /KW                 |
| ISO 8302                        |  |
| <b>COLOUR FASTNESS TO LIGHT</b> | $\geq 7$                                 |
| EN ISO 105-B02                  |  |
| <b>COLOUR FASTNESS TO WATER</b> | $\geq 4$                                 |
| EN ISO 105-E01                  |  |
| <b>RUBBING FASTNESS</b>         | $\geq 4$                                 |
| EN ISO 105-X12                  |  |
| <b>GUT N° PRODIS</b>            | 9AB925EB                                 |



All rights reserved to alter technical specifications.

[www.bloq.nl](http://www.bloq.nl)